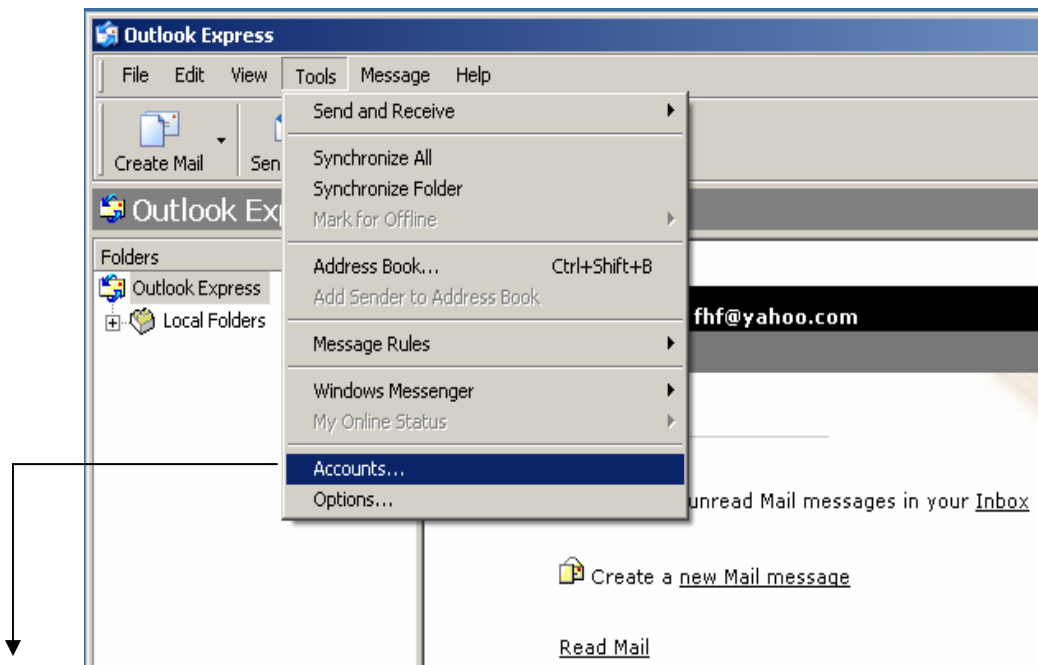


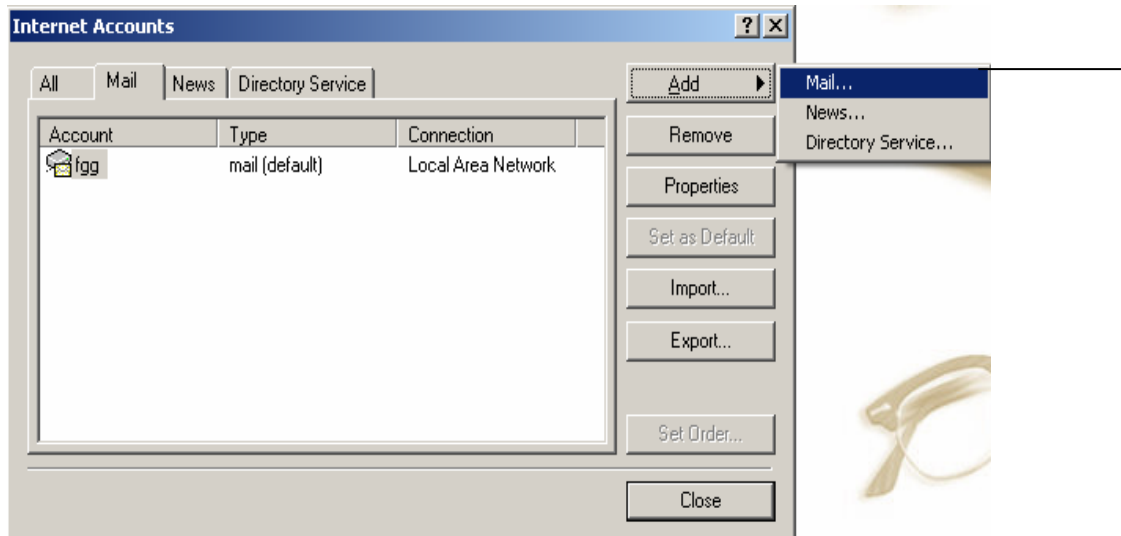
'How to Setup Email access for'. Microsoft Outlook Express version 5.5/6.0



1. Open Microsoft Outlook Express application and click on the **Tools** Menu (on the top toolbar). Scroll down until you see **Accounts** and select the option.

Note:

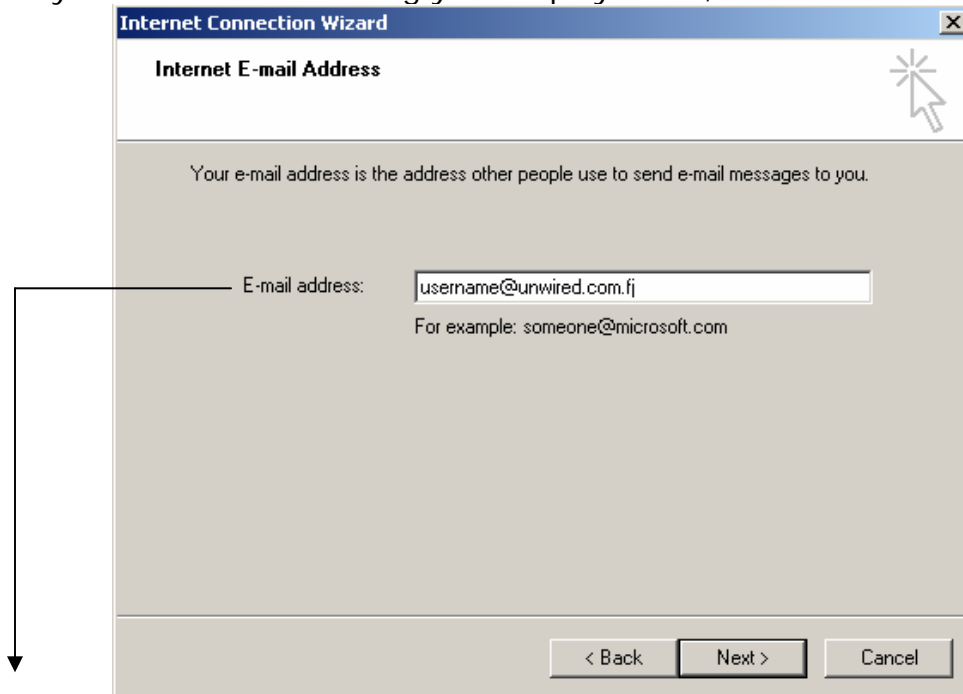
If you don't see **Accounts** right away it may be hidden. Click on the small downward arrow at the bottom of the **Tools** menu to reveal hidden menu options.



2. Click on the **Add** button at the top right hand side and select **Mail**. This will start the **Internet Connection Wizard**.



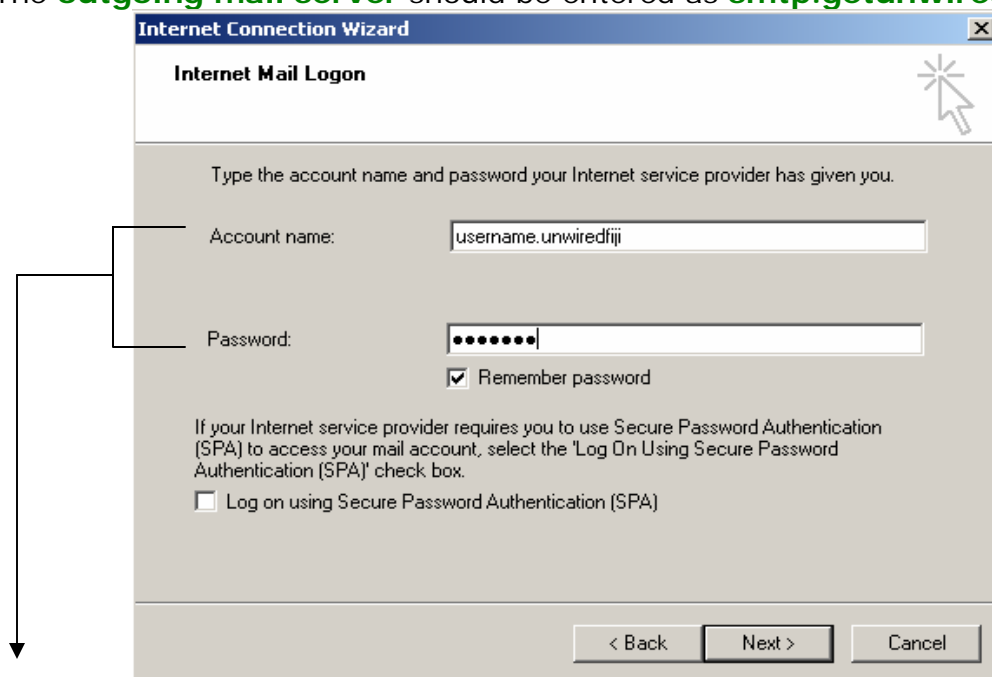
3. (Your Name): Enter your **Display Name**. This should be your first and last name (This will be the name, which will appear in the "From" line when you send e-mail to others). Once you are finished entering your display name, click the **Next** button.



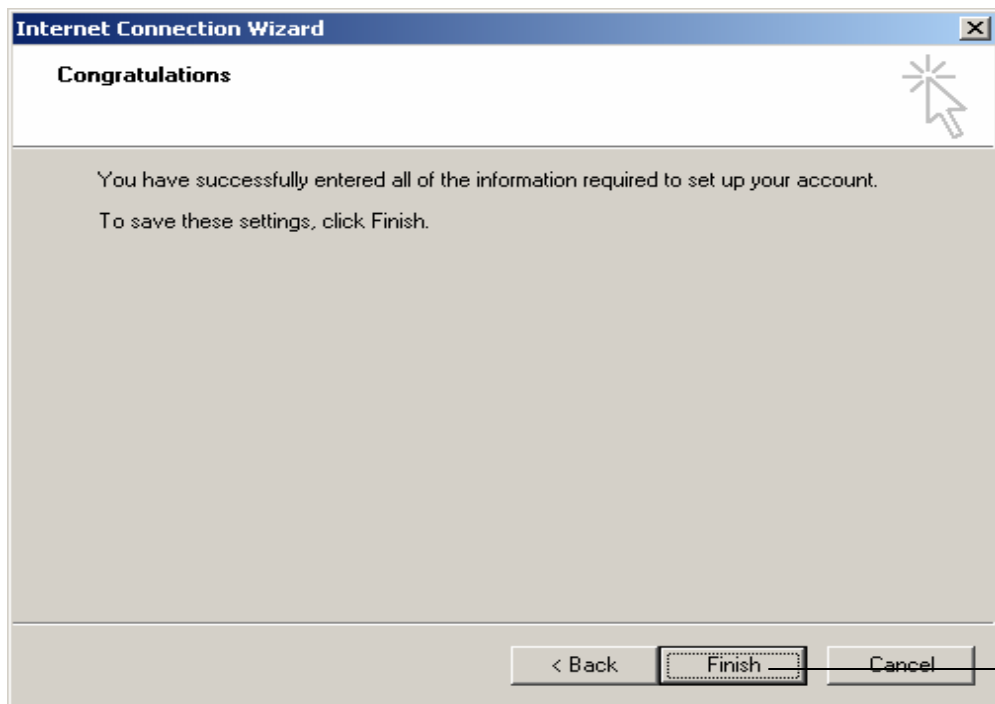
4. (Internet E-Mail Address): Enter your **E-Mail Address**. i.e username@unwired.com.fj
This will be the address that is displayed on the "From" line when you send e-mail to others. Once you are finished entering your E-Mail Address, click the **Next** button.



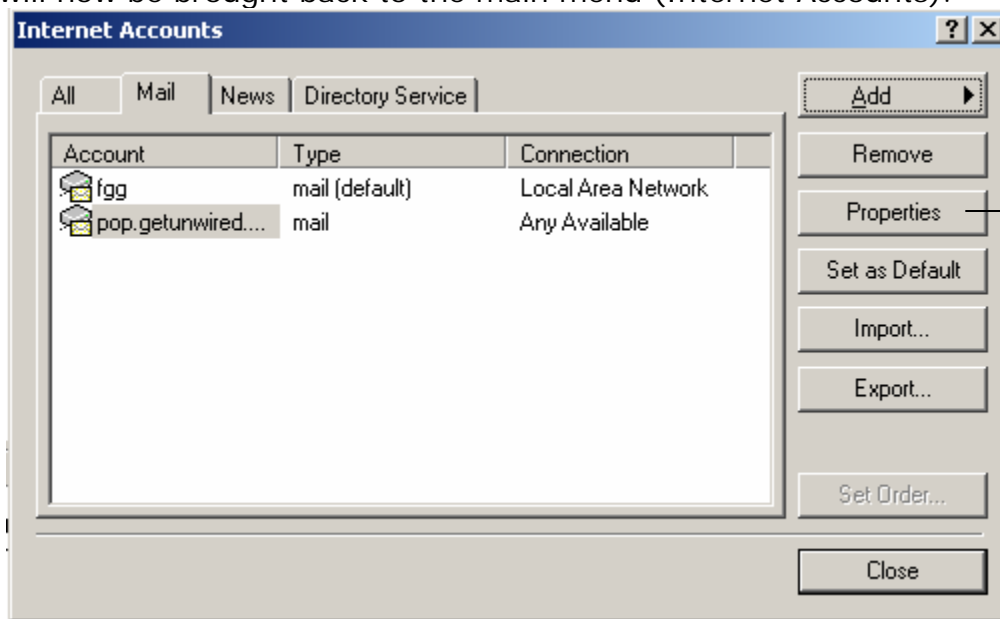
5. (E-mail Server Names): Under “My incoming mail server is a server, choose the **POP3** option from the dropdown menu. Under the “**incoming mail** (POP3, IMAP or HTTP) server:” box, enter **pop.getunwired.com.fj**. The **outgoing mail server** should be entered as **smtp.getunwired.com.fj**



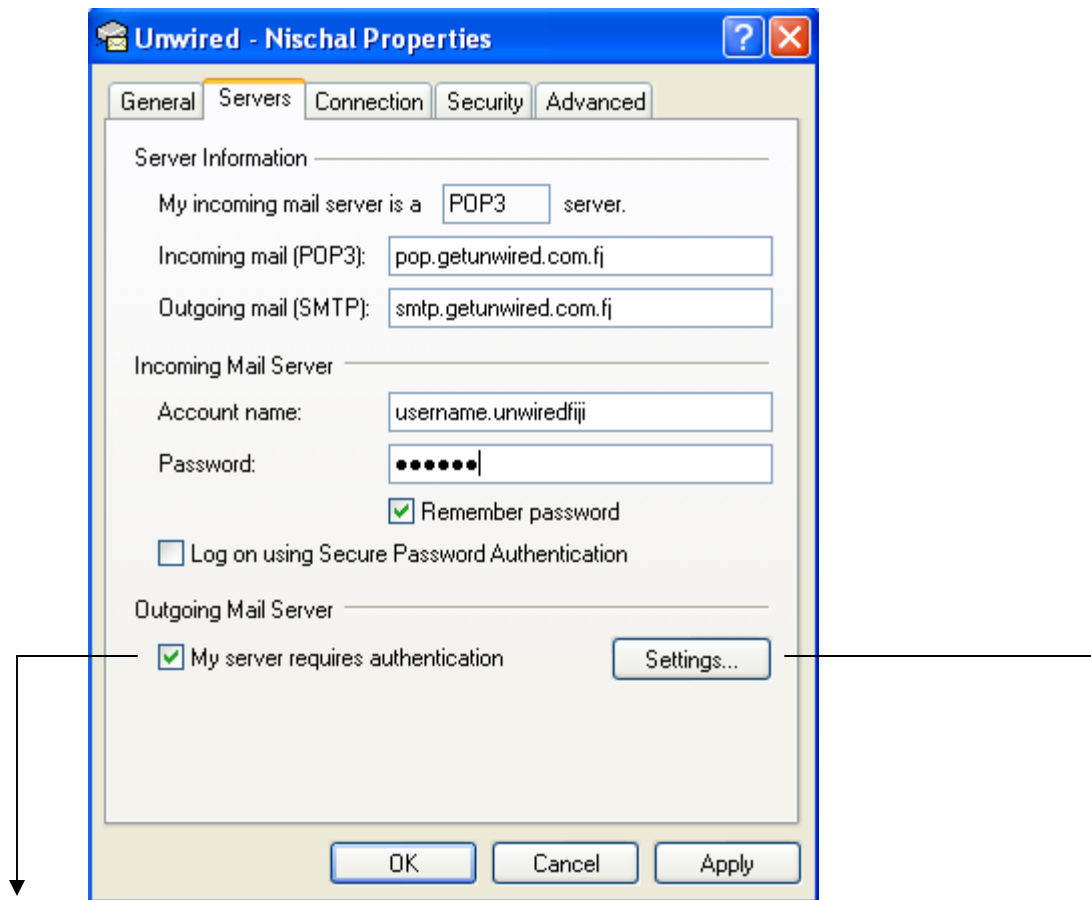
6. Under **Account name** enter in your Unwired username i.e. (username.unwiredfiji) and then your password. The password is the same password which is used to log into your BlueTie web account. Be sure to check the box labeled “**Remember password**”, if you do not wish to enter the password every time you check your e-mail. Click the **Next** button to continue.



7. Click the **Finish** button to complete the *Internet Connection Wizard*. You will now be brought back to the main menu (Internet Accounts).



8. At the **Internet Accounts** screen, highlight the new account you just created and click the **Properties** button located on the right-hand side.



9. Click on the **Servers Tab** at the top. There is a checkbox labeled "**My Server Requires Authentication**". Be sure to check off the button, and press OK when finished.

10. Click on the **Settings** button. Select "**Use same settings as my incoming mail server.**"



Your e-mail account is now set up and ready for use. To check your new email account, click the "**Send and Receive**" button located at the top of the Microsoft Outlook Express toolbar.