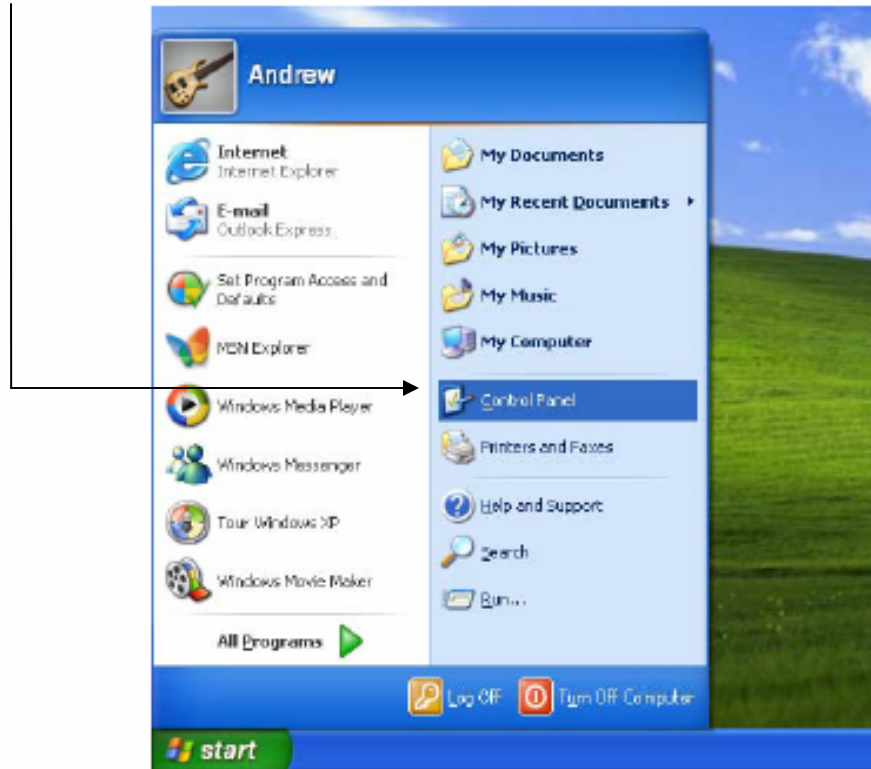
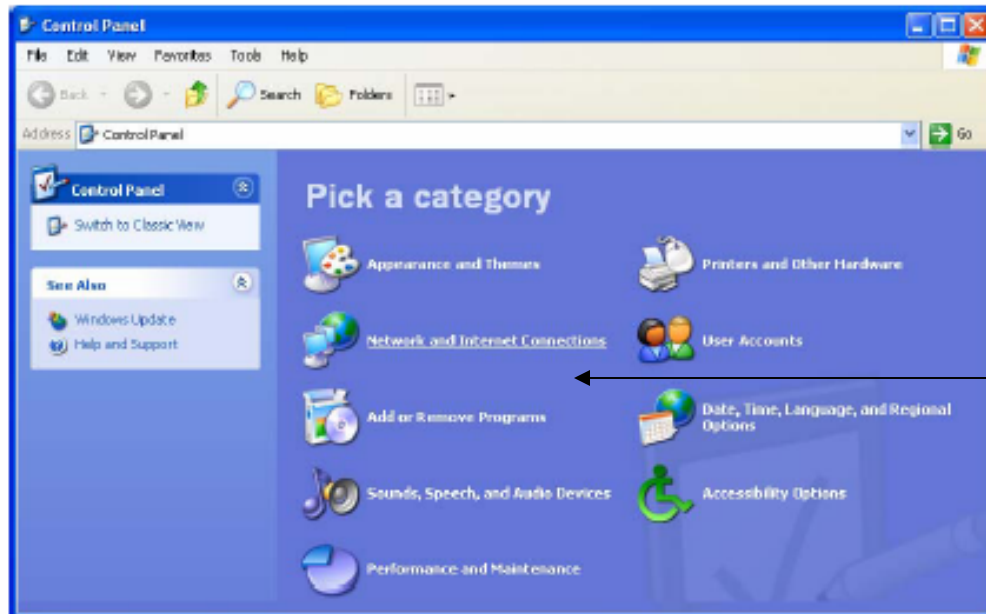


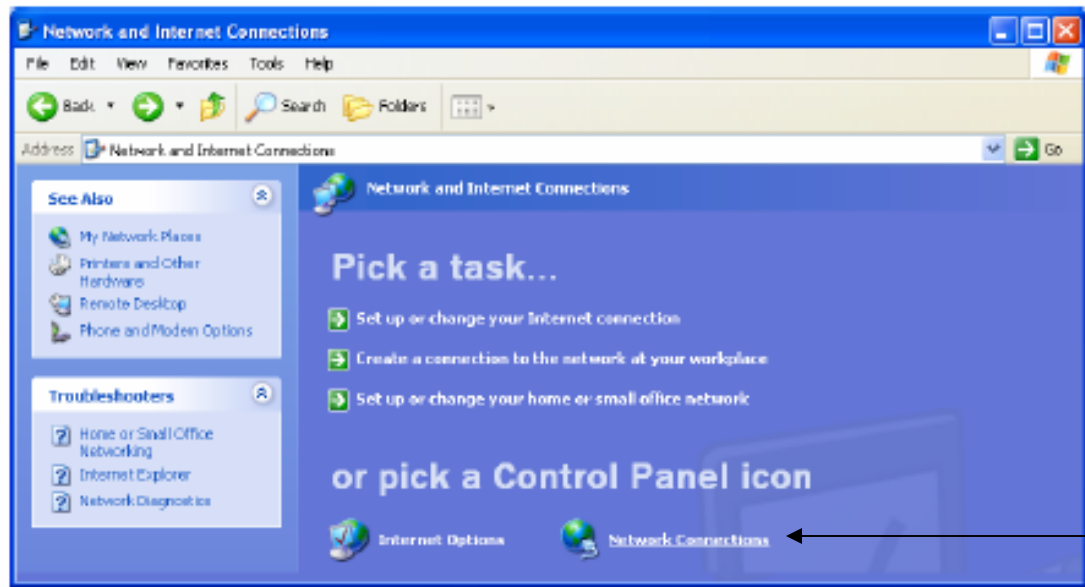
1 Select **'Control Panel'** from the Start menu.



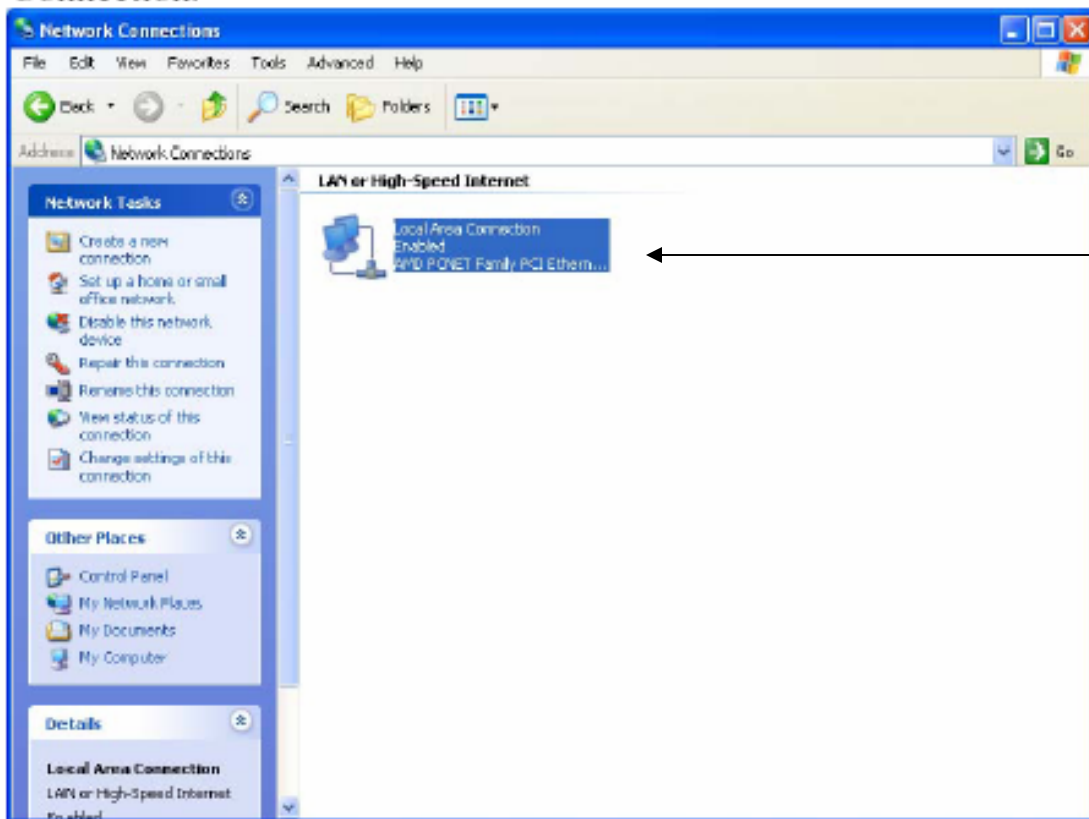
2 Select **'Network and Internet Connections'**



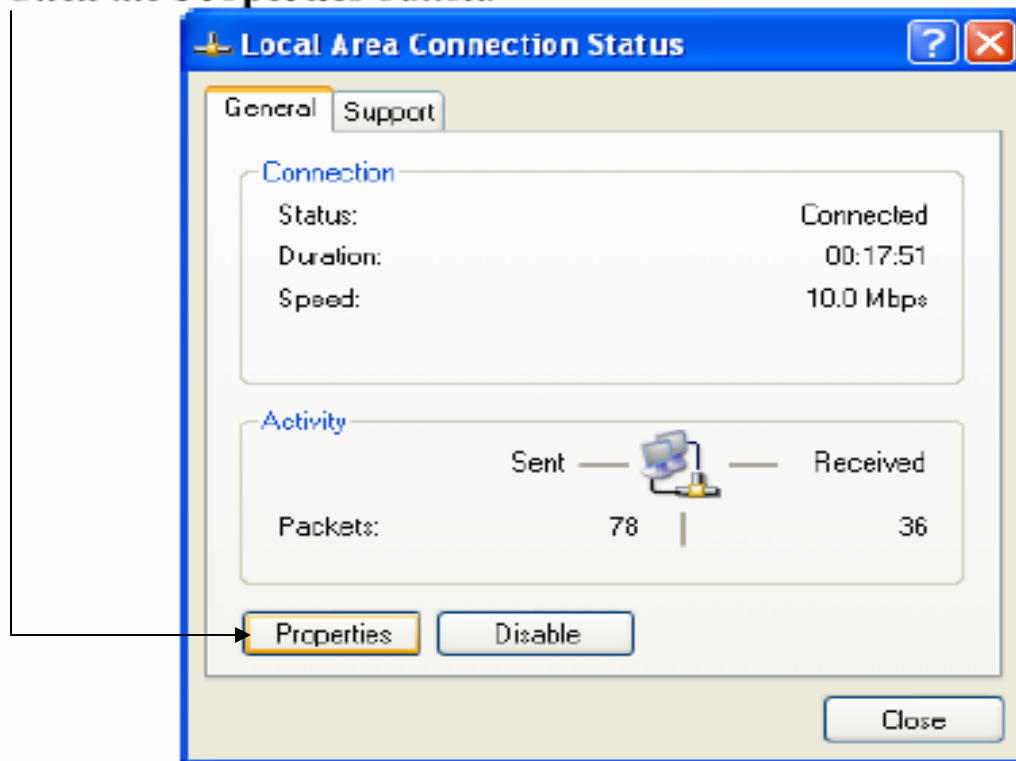
3 Select 'Network Connections'.



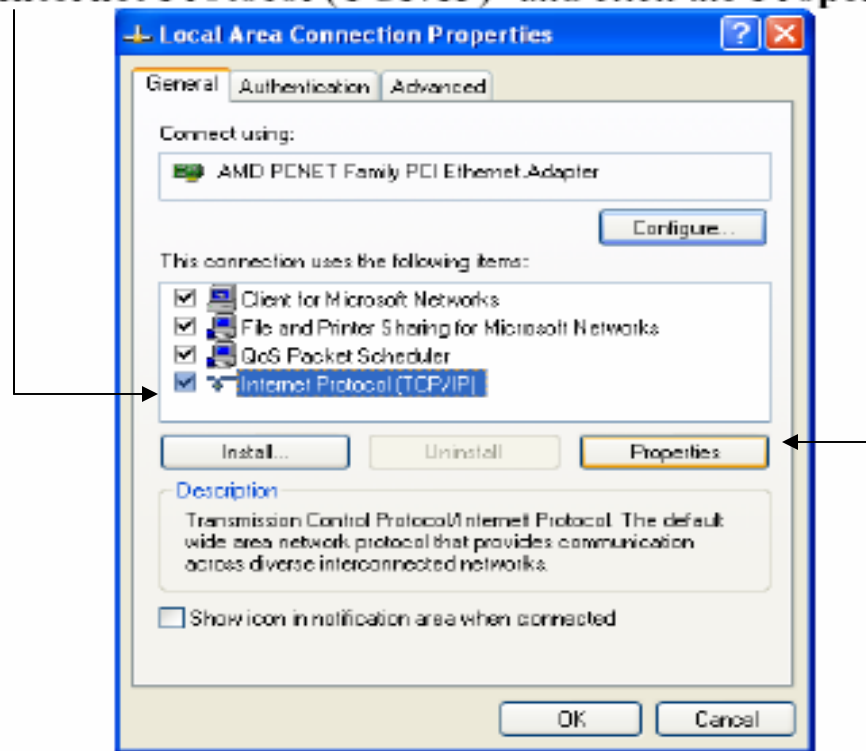
4 Double click on the icon for your Ethernet adapter. Ie. Local Area Connection.



- 5 Click the **Properties** button.



- 6 Select '**Internet Protocol (TCP/IP)**' and click the **Properties** button.



- 7 Ensure that the *'Obtain an IP address automatically'* and *'Obtain DNS server address automatically'* are selected.

