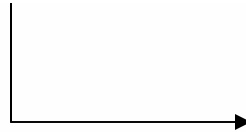


## Ethernet Modems

1. Locate your computer's Ethernet port. This should be at the back of your computer. Plug in the Ethernet cable provided.



2. Connect the other end of the Ethernet cable to your modem.



3. Connect the AC power adapter provided to the back of the modem. Plug the adapter into a wall socket or power pack and turn the power on



Only use the AC power adapter supplied. Using any other power adapter may cause damage to the modem.



**4.** With the modem facing towards you, rotate the front antenna clockwise to the upright position.



**5.** Press the power switch located at the bottom. The lower indicator light should turn green.



# PCMCIA Card Installation Guide

## Connect the Wireless Card

Your PCMCIA slot can usually be found on the right or left hand side of your laptop.



**1**  
Rotate the small antenna on the side of your Wireless Card until it is vertical. The antenna needs to be in the upright position to work correctly.



**2**  
Slide the Wireless Card into the PCMCIA slot of your laptop. The light on the top of the card will blink when the card has been correctly inserted.



**3**  
While the card is searching for a connection, its light will flash slowly. Once connected to the Unwired network, the light will remain a solid green.  
  
If you are not able to connect to the Unwired Network, please attach the External Antenna (Step 3) and try again.

## Attach the External Antenna

The External Antenna will help improve your received signal.



**1**  
Turn the small antenna down, and pull gently on the antenna at its base to remove.



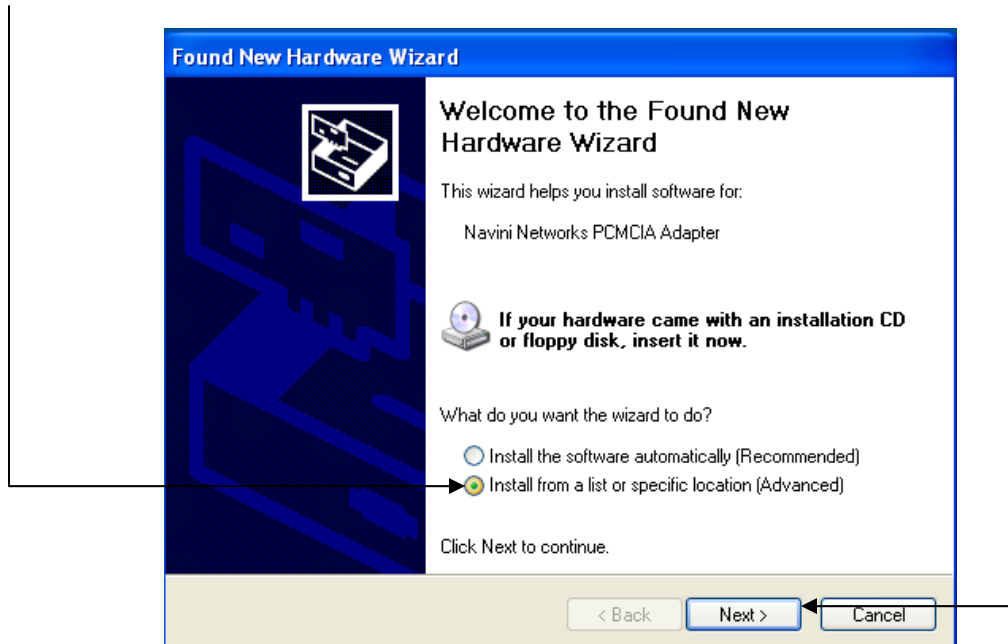
**2**  
Plug the External Antenna's cable into the connector on the Wireless Card.  
*Note: To avoid damaging the connector, ensure that you do not apply any force to the cable when removing it.*



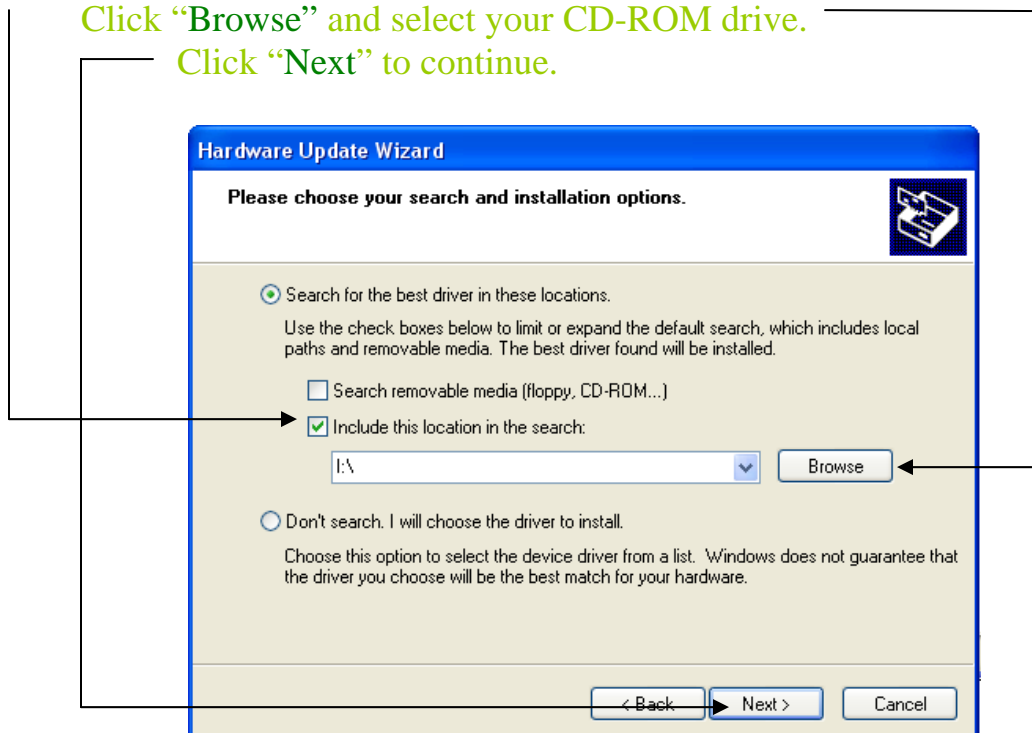
**3**  
Ensure the External Antenna is upright, and firmly placed in its base. For higher performance, reposition the antenna using the Unwired Reception Assistant found on the installation CD.

## How To Install The Driver for the Unwired PCMCIA Card.

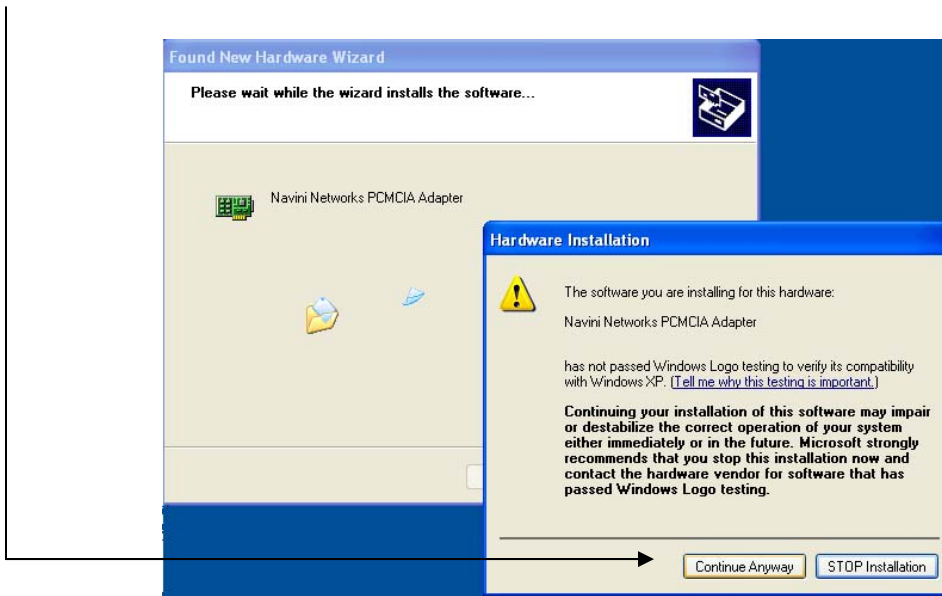
After inserting the PCMCIA card the “Found New Hardware Wizard” will automatically open. Insert your driver CD into the CD-ROM Drive.  
Select “Install from a list or specific location (Advanced)” and Click “Next”.



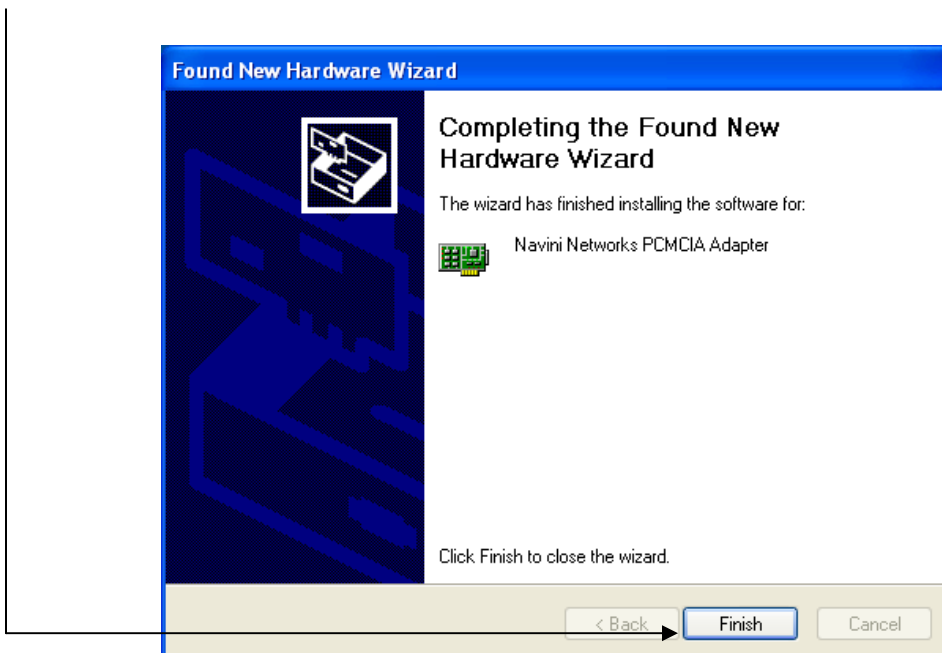
Select “Include this location in the search” check box.  
Click “Browse” and select your CD-ROM drive.  
Click “Next” to continue.



Click “Continue Anyway”.



Click “Finish”.



**Experience the Unwired Mobility.**  
**No Wires. No Wait. No Worries.**